

V168



VITREO



THE TILE GALLERY

TILE • STONE • LIGHTING • FIREPLACES

225 WEST OHIO STREET, CHICAGO, ILLINOIS 60654

312.467.9590 | WWW.TILEGALLERYCHICAGO.COM

VITREO (3/4" x 3/4" - 2 x 2 cm)



★ 160

★ 161

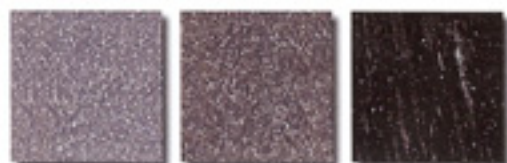
★★★ 149



★ 150

★ 151

★ 152



★ 153

★ 154

★★ 155



★★★ 208

★★ 185

★★★ 209



★★★ 179

★ 180

★ 181



★ 182

★ 183

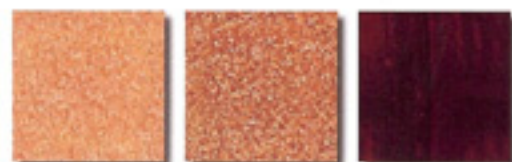
★★ 184



★ 165

★★★ 162

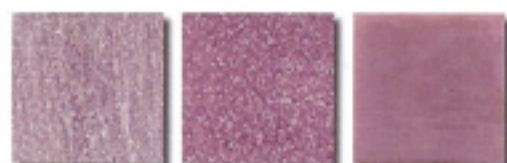
★★ 166



★★ 163

★★ 164

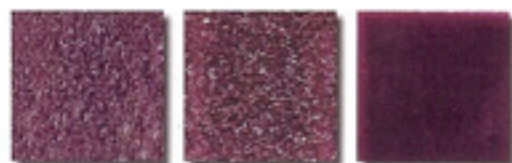
★★★ 207



★ 167

★★ 168

★★★ 175



★★ 169

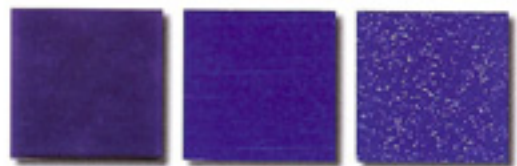
★★ 170

★★★ 176

VITREO (3/4" x 3/4" · 2 x 2 cm)



★★ 171 ★★ 172 ★★ 173



★★★ 174 ★★★ 133 ★★ 132



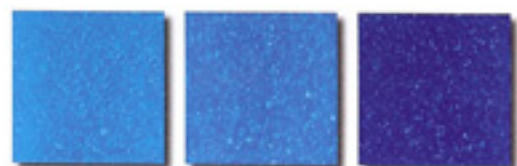
★ 135 ★ 136 ★★ 137



★★ 138 ★★★ 128 ★★★ 129



★ 120 ★ 121 ★ 122



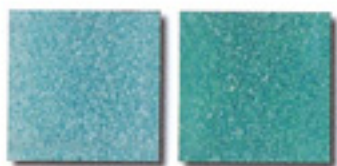
★ 123 ★ 124 ★★ 130



★★ 140 ★★★ 143 ★★ 141



★★ 142 ★★★ 144 ★★ 131



★ 110 ★ 111



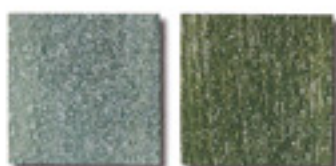
★★ 112 ★★ 113

VITREO (3/4" x 3/4" - 2 x 2 cm)



*** 100

* 117



** 118

** 119



* 101

* 102

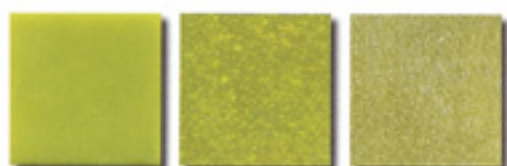
** 103



** 104

** 105

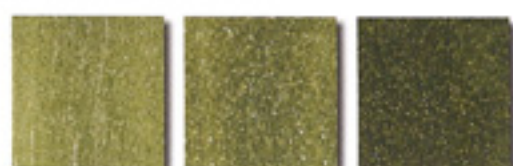
*** 106



*** 114

** 115

** 107



** 108

** 109

** 116



*** 201

*** 202

*** 203



*** 204

*** 205

*** 206

WEIGHT AND DIMENSIONS TABLA DE MEDIDAS Y PESO

SIZE TAMAÑO	3/4" x 3/4" - 2 x 2 cm
THICKNESS ESPESOR	~ 5/32" - 4 mm
SHEET SIZE MEDIDAS HOJAS	12 7/16" x 12 7/16" 31.6 x 31.6 cm
JOINT JUNTA	~ 2/48" - 1 mm
WEIGHT PESO	~ 1.6 lb/SQF - 7 kg/m ²
SHEETS PER BOX HOJAS POR CAJA	20
WEIGHT PER BOX PESO POR CAJA	~ 34.45 lbs - 15.66 kg
QUANTITY PER BOX CANTIDAD POR CAJA	21.528 SQF - 2 m ²
SIZE OF THE BOX TAMAÑO DE CAJA	13" x 13" x 4" - 33 x 33 x 10.16 cm

· Colors may vary somewhat by production lot.
· Los colores pueden presentar variaciones según el lote.

ASTM TESTS

TEST PERFORMED AND REQUIREMENTS	RESULTS
Range of thickness (ASTM C499)	3.91 mm
Facial dimensions (ASTM C499)	19.98 mm
Wedging (ASTM C502)	0.0%
Thermal shock (ASTM C484)	Resistant
Bond strength (ASTM C482)	passes
Crazing (ASTM C424)	passes
Friction coefficient (ASTM C1028-96)	Dry condition 0.76 Wet condition 0.61
Water absorption (ASTM C373)	0.08%
Apparent porosity (ASTM C373)	0.20%
Apparent specific gravity (ASTM C373)	g/cm 3:2.37
Bulk density (ASTM C373)	g/cm 3:2.36
Frost resistance (ASTM 1026)	Resistant
Chemical resistance (ASTM 543)	Resistant
Color resistance to fading (DIN 51094)	Resistant
Coefficient of linear thermal expansion (ASTM D696)	Negligible (dilation is absorbed by grout)
Resistance to fire	Non-combustible - Class O (emits no toxic gas at melting)
Wedging of flat, rectangular, ceramic wall and floor tile (ASTM C502-93A)	0.0%



This brochure has been printed on recycled paper.
Este folleto se ha impreso en papel reciclado.



THE TILE GALLERY

(312) 467-9590